

CREST CAMBERWELL

936-938 Toorak Rd, Camberwell, 3124



WHERE UNWAVERING CRAFTSMANSHIP  
MEETS TIMELESS DESIGN

[crestcamberwell.com.au](http://crestcamberwell.com.au)

# DESIGN

Crest is a masterful composition of form and feeling, where refined aesthetics and natural rhythms converge in quiet harmony. Thoughtfully curated and expertly realised, it stands as a sanctuary of sophistication—an invitation to live with grace, beauty, and an intrinsic connection to place. Every element is designed with intention, from the sculptural facade to the interplay of light and space, crafting an environment that feels both grounding and uplifting. Materials of enduring elegance speak to a philosophy of authenticity and permanence. Here, the art of living is redefined, offering an elevated experience shaped by nature and craftsmanship, designed for generations to come.





## SPLINTER SOCIETY

“This collection of homes has been designed to capture the essence of Camberwell’s most stately brick homes, and combine it with a modern elegance and sophistication to match the best of Melbourne’s contemporary design”.

Chris Stanley, Director of Splinter Society

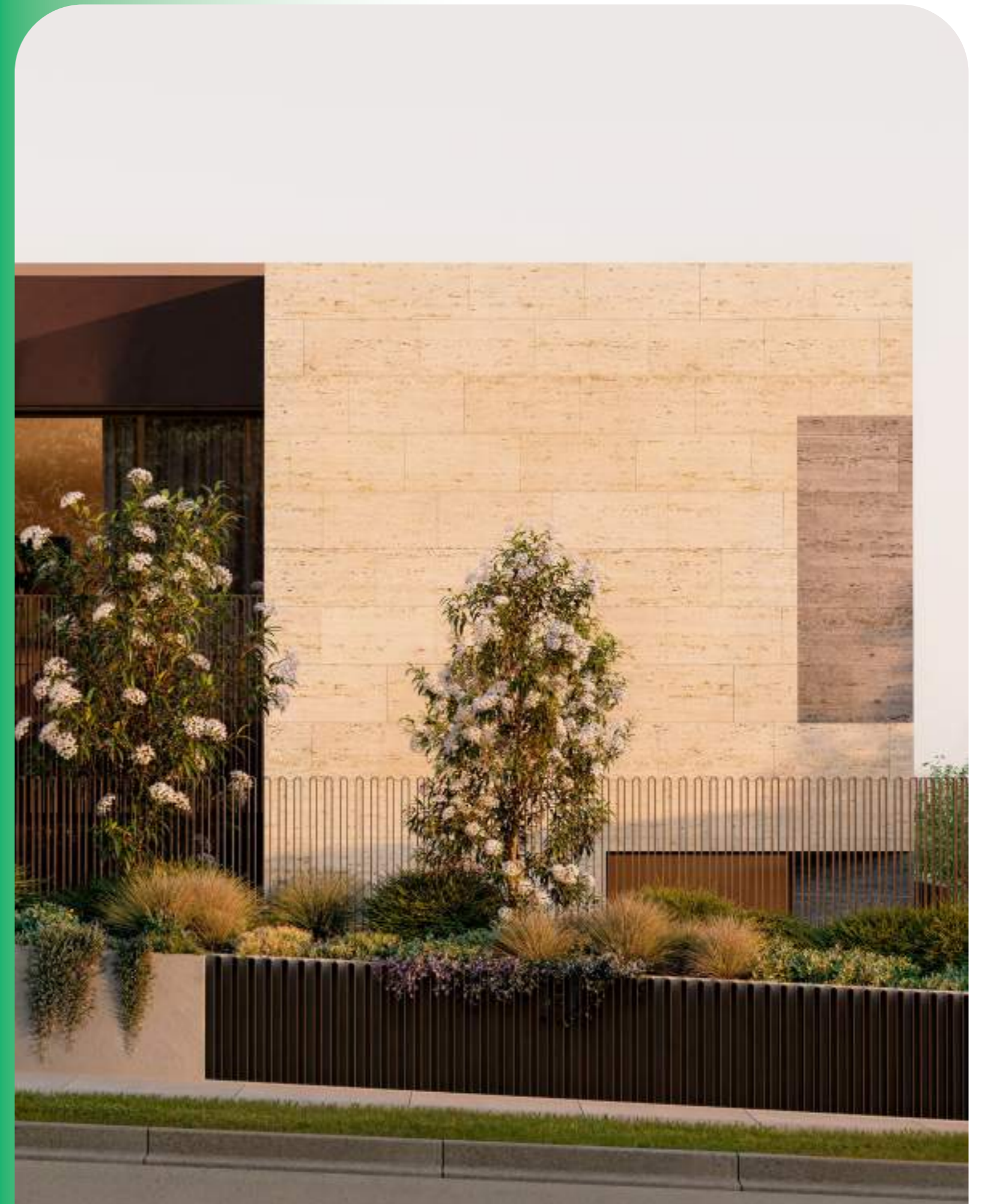
Led by Asha Nicholas and Chris Stanley, Splinter Society is a Melbourne-based architecture and interior design studio committed to crafting custom human environments distinguished by diverse experiences. With an emphasis on the design process, they work to create distinctly tactile projects, drawing on layered influences. Every project is grounded in solid principles of functionality and environmental sustainability.

As an office, they enjoy exploring new ideas as a collaborative process with clients, consultants and craftspeople. Working closely with their clients, they extract key elements for personal enjoyment in residential projects. In the spirit of reconciliation, Splinter Society Architecture acknowledges the Traditional Custodians of the country on the lands in which they practice and reside.

## ARCHITECTURE

The result of vision, expertise, and meticulous craftsmanship, Crest’s architecture is an expression of modern design and refined sophistication. At once elegant and robust, the building draws on elements from Camberwell’s heritage landscape, referencing the stately brick homes that have become synonymous with this affluent suburb. Contemporary yet timeless, its form is carefully composed to maximise sweeping emerald vistas, instilling an unparalleled sense of openness and grandeur. Cloaked in enduring natural materials—including veined travertine, textured concrete, and bronze aluminium—Crest exemplifies modern refinement.

Every detail has been considered to create a residence that seamlessly settles within its natural surrounds while establishing a new benchmark for contemporary living.





Defined by a captivating sculptural form and an inviting ground-floor presence, Crest's facade is a masterclass in design. The upper levels embrace extensive glazing, framing breathtaking canopied views while flooding interiors with soft, natural light. Expansive corner balconies are woven into the architecture, delivering uninterrupted panoramas and generous spaces designed for effortless entertaining. The result is a facade that is visually striking and inherently purposeful, elevating the living experience at every turn.



Toorak Road Facade – Artist's Impression

# INTERIORS

Crest's interiors are a clever interplay of texture, materiality and light, where each element has been meticulously selected to enhance aesthetics and functionality. Rich in natural finishes, these spaces are designed to feel tactile and grounded, echoing the beauty of their verdant surrounds. The elegant juxtaposition between stone and timber fosters warmth and depth, creating an environment that is invitingly sophisticated. Expansive proportions prioritise openness, allowing natural light to cascade through the interiors and frame the landscape beyond. Bespoke details—including custom joinery and tailored finishes—speak to an uncompromising commitment to craftsmanship. Every space is more than just beautifully appointed; but rather is designed for longevity, offering a refined foundation for contemporary living.

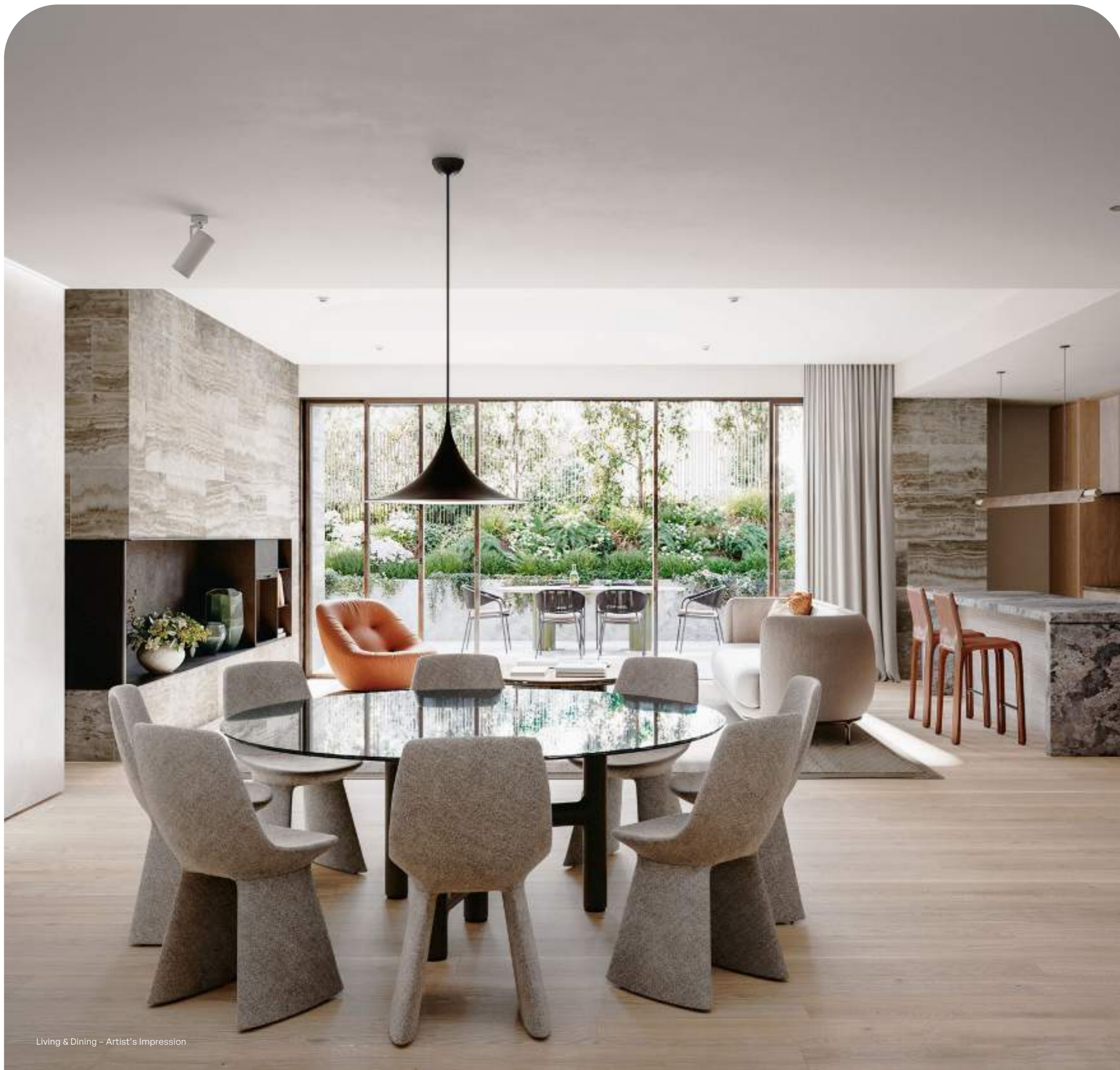


## KITCHEN & LIVING

An ode to form and function, Crest's kitchen and living spaces are an exquisite display of considered craftsmanship. Anchored by a bold, stone benchtop with a striking bladed edge, its monolithic presence echoes the architectural facade, lending a sense of cohesion to the design. Seamlessly integrated timber veneer cabinetry not only elevates the aesthetic but also optimises functionality, ensuring that culinary tasks unfold with grace and ease. At one end of the kitchen is an integrated Fisher & Paykel fridge/freezer, while at the opposite end, integrated appliances include a state-of-the-art V-ZUG oven, combi microwave, range hood, induction cooktop and integrated dishwasher. Premium brass tapware and bespoke lighting pendants are punctuated throughout, cultivating an atmosphere of elegance.







Living &amp; Dining – Artist's Impression

Underpinned by an expansive open-plan design that effortlessly transitions from indoors to outdoors, Crest is thoughtfully crafted to provide an elevated living experience. The kitchen, living and dining areas extend onto a spacious balcony, where breathtaking views of lush greenery create the ultimate backdrop for entertaining. The considered design includes full-height sliding doors, providing the option to partially or fully close the balconies, for all year round use.



Designed to foster tranquillity and connection, Crest's outdoor spaces offer a serene retreat within a blooming and thoughtfully curated landscape. The planting palette, chosen for its resilience and year-round vibrancy, ensures enduring greenery with minimal maintenance. At street level, verdant planters soften the architectural form, enriching the streetscape while creating an inviting sense of arrival for residents and guests alike.



Courtyard – Artist's Impression



Bedroom Vignette – Artist's Impression

## BEDROOM & MASTER ENSUITE

A retreat of refinement, Crest's master suite is the epitome of relaxation and rejuvenation. Plush 100% wool carpets provide a sense of quiet luxury, while uninterrupted green vistas evoke serenity. A custom-designed walk-in robe and built-in vanity are curated for a modern lifestyle and house all of your bespoke items. The ensuite extends the theme of understated opulence, with a freestanding bath set against a travertine stone wall. Floating shelving, premium brass finishes, and an oversized walk-in shower complete the spa-like experience, transforming daily rituals into moments of pure indulgence.





# LOCATION

Nestled in the eastern metropolis of Melbourne, Camberwell is a refined neighbourhood boasting a rich and extensive history. Imbued with an atmosphere of opulence, the prestigious landscape offers a charming culmination of winding and whimsical boulevards with deeply textured neighbourhoods showcasing award-winning dining, exquisite brunches and a plethora of retail indulgences.

Defined by a landscape of old-world luxury and breathtaking greenery, the Camberwell lifestyle is undeniably quintessential—making it one of Melbourne’s most sought-after postcodes.



Firmly rooted in the heart of the suburb is the bustling Camberwell Junction, home to the iconic Camberwell Market and newly restored Rivoli Cinema. An urban cornucopia, this vibrant neighbourhood is a paradise for those seeking comfortable luxury, with Crest Camberwell at the centre of it all.

EATING + DRINKING

- 01. Linger Cafe
- 02. The Bakers Wife
- 03. Haiku
- 04. My Other Brother
- 05. Laurent
- 06. Le Croissant
- 07. The Old Garage
- 08. Young's Wine Rooms
- 09. East End Wine Bar
- 10. Cafe Paradiso
- 11. La Cabra
- 12. Meat & Wine Co
- 13. Italy 1 Camberwell
- 14. Fiorelli Restaurant

RETAIL + ENTERTAINMENT






- 15. Oska
- 16. Country Road
- 17. Abode
- 18. Leo's Supermarket
- 19. Camberwell Markets
- 20. Village Cinemas Rivoli
- 21. Coles
- 22. Woolworths
- 23. Kmart
- 24. Tooronga Village

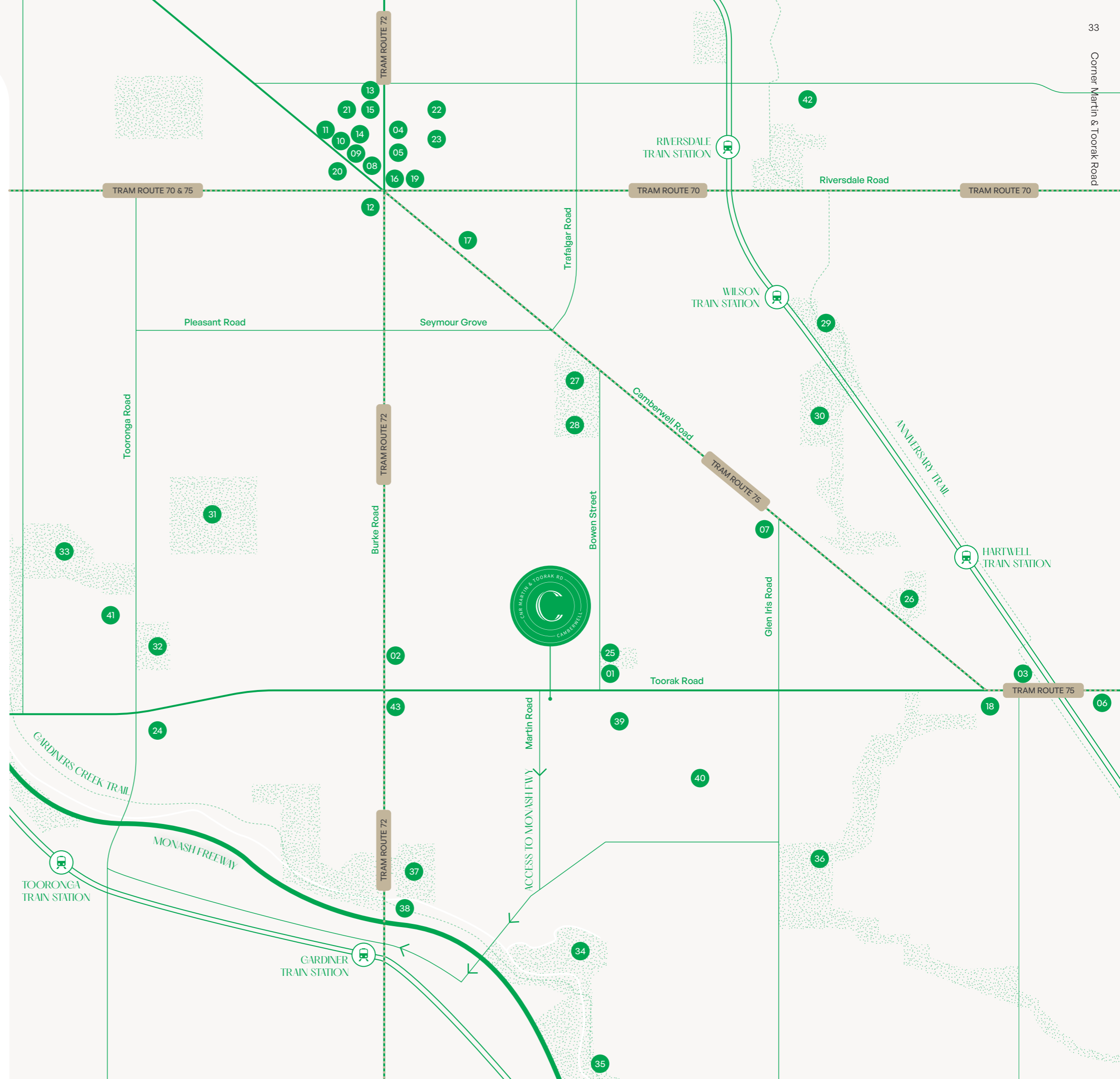
PARKS + RECREATION

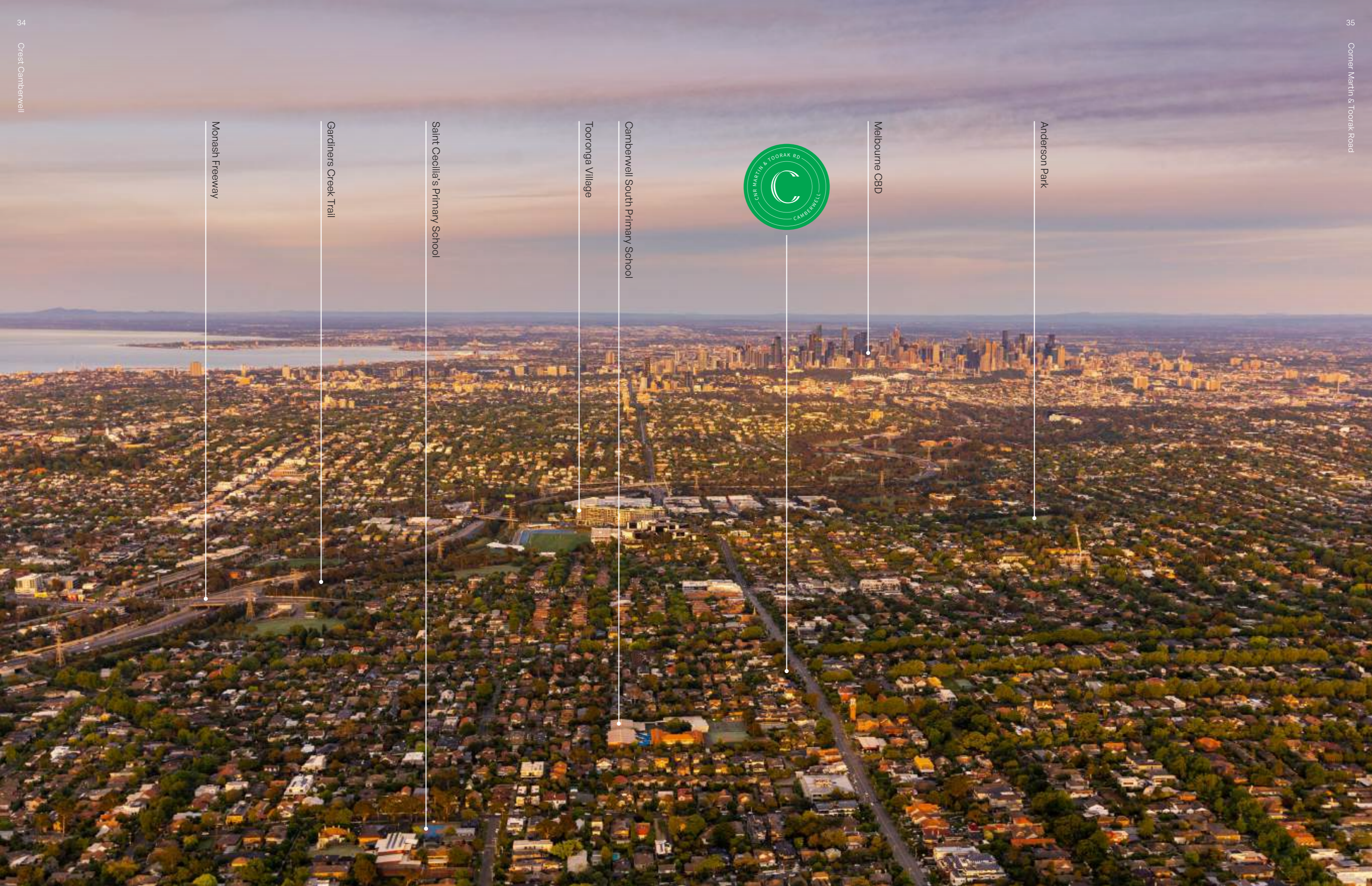
- 25. Bowen Gardens
- 26. Fordham Gardens
- 27. Camberwell Sports Ground
- 28. City of Camberwell Tennis Club
- 29. Frog Hollow Reserve
- 30. Willison Park
- 31. Anderson Park
- 32. Cato Park
- 33. John Gardiner Reserve
- 34. Nettleton Park & Playground
- 35. Glenburn Bend Park
- 36. Ferndale Park
- 37. Howard Dawson Reserve
- 38. Gardiner Creek Trail

EDUCATION + HEALTH

- 39. Camberwell South Primary School
- 40. Saint Cecilia's Primary School
- 41. Bialik College
- 42. Camberwell High School
- 43. Epworth Camberwell

-  Walking trail
-  Gardiners creek
-  Park
-  Train line
-  Tram line





Anderson Park

Melbourne CBD

Camberwell South Primary School

Tooronga Village

Saint Cecilia's Primary School

Gardiners Creek Trail

Monash Freeway



Bakers Wife

## HOSPITALITY

Invigorate the senses by exploring the best culinary delights Camberwell has to offer. Whether you are meeting a friend for a late Sunday brunch or exploring the most electrifying cocktails, Camberwell is guaranteed to have just the thing.

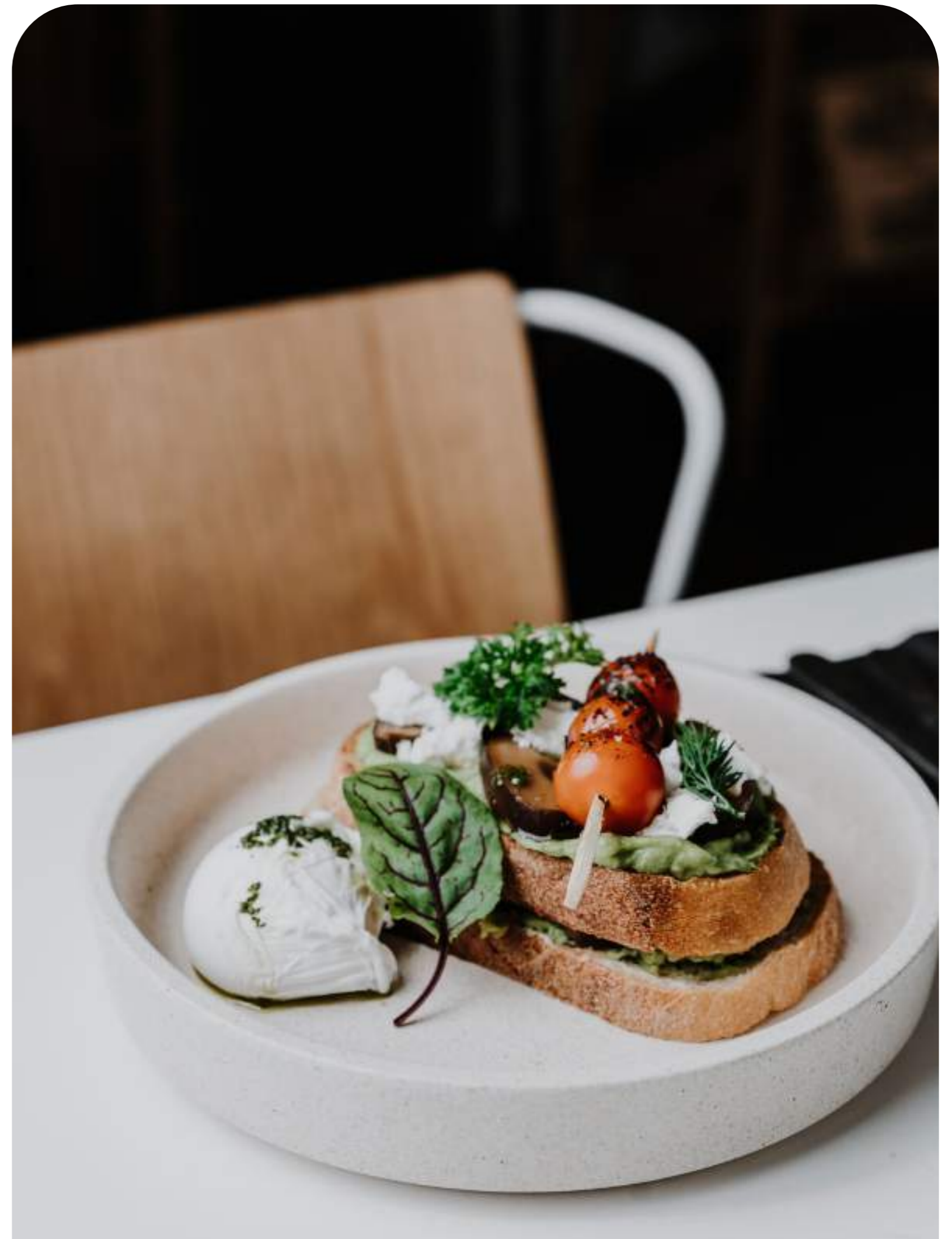
Indulge in artisan baked goods and expertly brewed coffee beans from The Bakers Wife or whisk past Linger Cafe, located in a historic, hundred-year-old church baring mouthwatering French pastries. Sophisticated yet highly eclectic, evenings in Camberwell reveal a bounty of revered flavours. A beacon of exuberant bars, coveted dining experiences and idyllic alfresco restaurants, experience authentic Italian cuisine at Fiorelli Restaurant or gorge on award-winning dishes with a curated wine list at The Meat & Wine Co.

## BRUNCH DELIGHTS

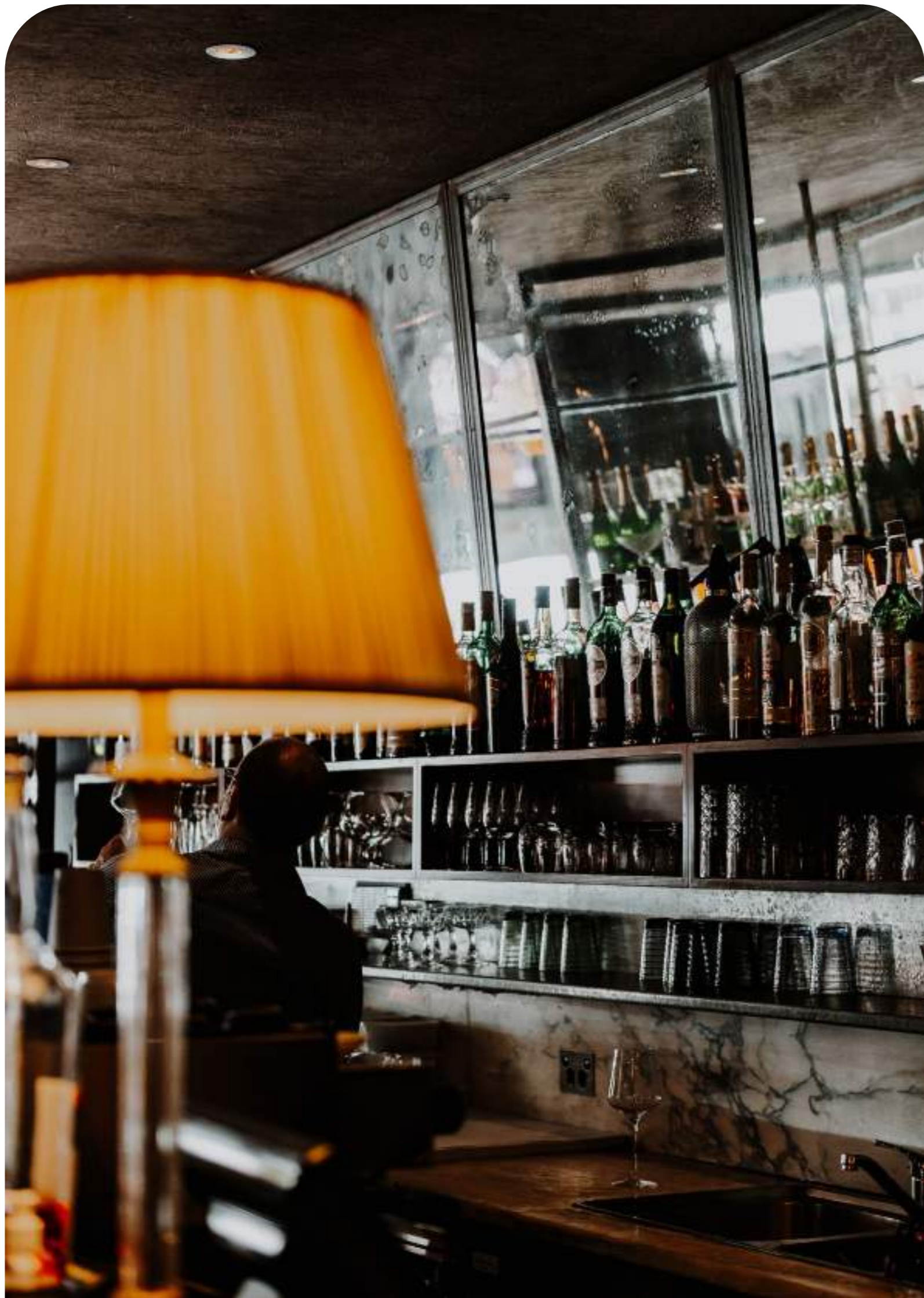
Within walking distance of home, feast at the unique culinary Japanese fusion that is Haiku. Boasting a modern Japanese brunch cuisine, Haiku is an exciting and futuristic approach to the traditional izakaya. Relish in owner Reji Honour's Japanese home-style cooking with his renowned Okonomiyaki dish—a crispy cabbage and spring onion pancake topped with Otafuku Okonomi Sauce, Kewpie mayo, bonito flakes, nori and of course, bacon. Accompany this with a coffee from local coffee roasters Industry Beans or try one of Haiku's signature Japanese beverages—the Suntory Kakubin Whiskey Highball is a must-try.

Step into The Bakers Wife in Camberwell for a delightful culinary experience. Indulge in freshly baked pastries and artisanal bread, crafted with care by skilled bakers. Savour a cup of aromatic coffee in the cosy ambience or for those with a penchant for herbal teas, discover an array from locally sourced purveyors. Treat yourself to a slice of their signature lemon drizzle cake, bursting with tangy citrus flavour. With its quaint charm and delectable offerings, The Bakers Wife promises a memorable visit for all.

BELOW The Old Garage  
RIGHT Haiku







## WINE & DINE

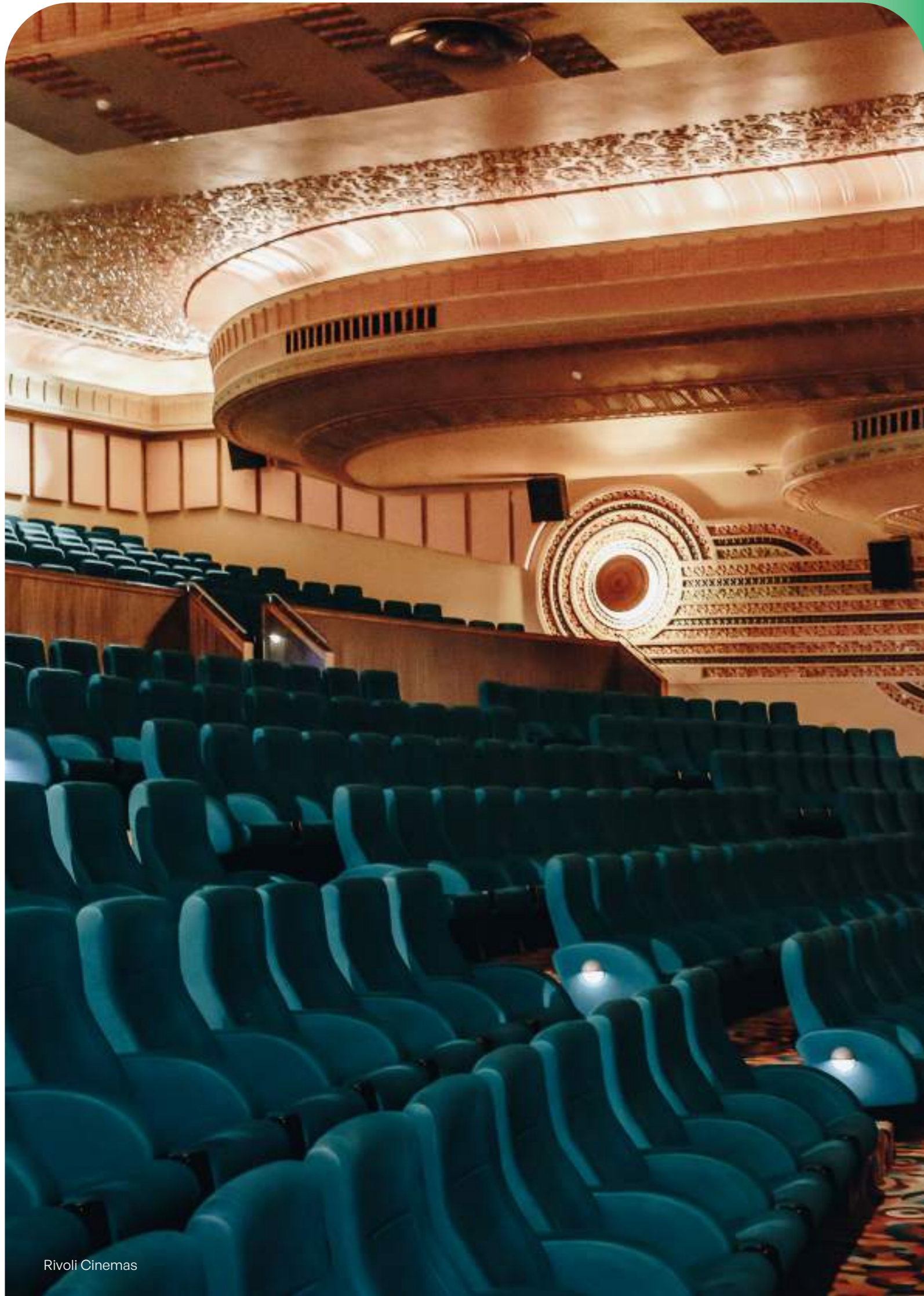
Indulge in the culinary wonders of Fiorelli, an Italian restaurant where exquisite flavours dance on your palate. Fall in love with a symphony of authentic Italian cuisine, from savoury antipasti bursting with Mediterranean ingredients to mouthwatering wood-fired pizzas adorned with artisanal toppings. Dive into the depths of flavour with velvety risottos and handmade pasta dishes, crafted with love and tradition. Savour each bite amidst the warm atmosphere, surrounded by the aromas of freshly baked bread and simmering sauces. Since its opening in 1991, Fiorelli has continued to craft every dish with precision and care, inviting you to experience the true essence of Italy.

From paddock to plate, only the finest locally sourced produce graces your table at The Meat & Wine Co, ensuring top-grade quality with each bite. Step into the cutting-edge interiors, a seamless blend of heritage roots and modern flair, setting the stage for a dining experience like no other. With a menu crafted with decadence in mind, each dish promises to satisfy even the most discerning guests, inviting them on a journey of gastronomic delight and sensory indulgence.

BELOW Fiorelli Restaurant  
LEFT Italy 1







## PLENTIFUL AMENITIES

Beyond the realm of bespoke eateries, Camberwell boasts impressive retail and entertainment offerings. Wander around the Camberwell Junction to discover more than 400 diverse retail and hospitality stores offering something for everyone.

On weekends, the Junction is abuzz with locals enjoying ethically sustainable boutiques, lavish day-spas for the soul and gourmet supermarkets filled with quality provisions. For a wholesome day with the kids or a glamorous date night, enjoy the cinematic experience that the historic Rivoli Cinemas can provide.

## RETAIL THERAPY

If you are seeking a day of self-care and retail therapy, Camberwell's selection of boutiques and homeware stores ensures this task is nothing less than inspiring. For beautifully-stitched garments made from natural fibres and biodegradable wool, head to Country Road. A few doors down, Oska is another well-loved Camberwell boutique known for its simple linen pieces, free-flowing silhouettes and understated leather accessories.

Just a stone's throw away, Abode is your next destination to get that self-love fix. Create a desirable cloud-like comfort in your home with an extensive selection of timeless essentials and luxury fabrics. With an amalgamation of local and imported textiles, Abode is a haven for interior decorating enthusiasts.

BELOW Oska  
RIGHT Abode





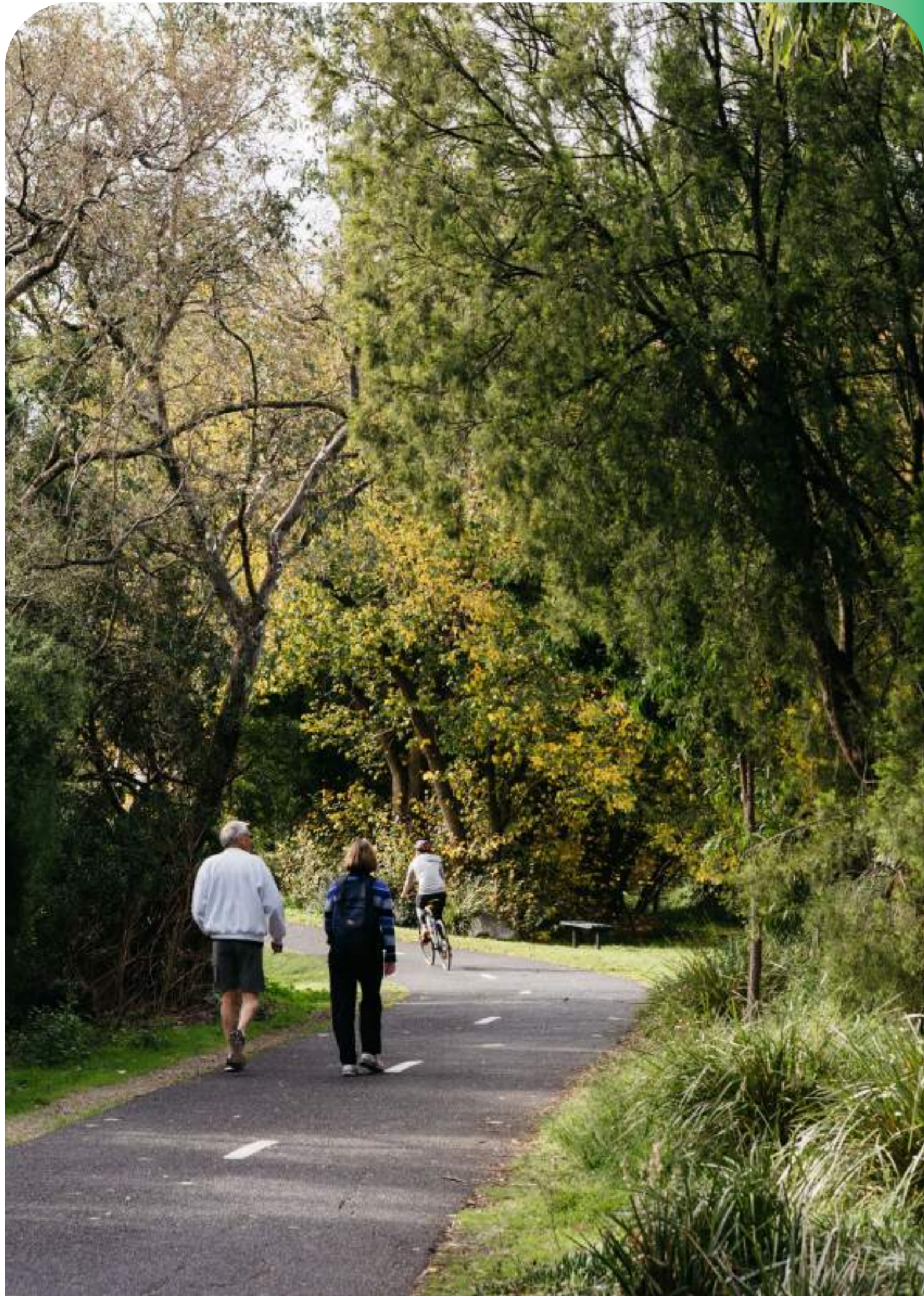
## FRESH PRODUCE

A Melbourne institution, the Camberwell Market is renowned for fresh, organic produce and delicately crafted bouquets made from freshly-picked flowers. Trade stories with friendly and knowledgeable stallholders as you peruse the finest ingredients Melbourne has to offer. You will smell the sweet scent of baked goods and blossoming peonies from a mile away. Stock up on gourmet delicatessen meat and marinated antipasto—ready to be stacked for your next grazing platter. With an array of fresh pasta stores and Italian cafe's, discover a little slice of Europe right at your finger tips.

LEFT & BELOW Camberwell Fresh Food Market







## PARKS, EDUCATION & TRANSPORT

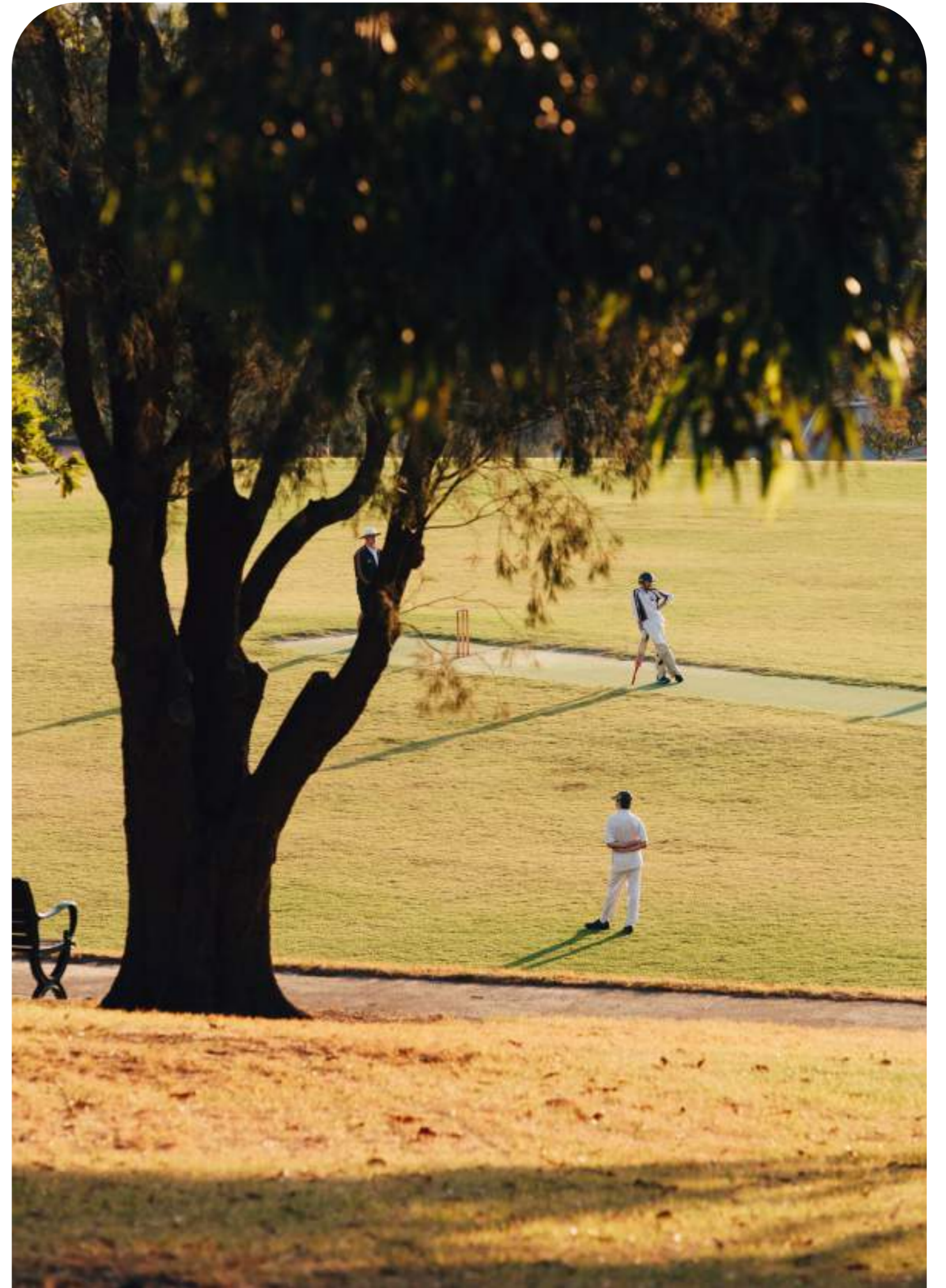
Renowned for its natural beauty, Camberwell is defined by its plethora of parks and gardens, with natural beauty found around every corner. Home to an abundance of native flora and fauna, breathe in the crisp air and bathe in the warmth of the sun on a Sunday morning saunter.

A stone's throw away at the end of Martin Road, walk past canopied trees at Ferndale Park and Glenburn Bend Park to restore a sense of balance and escape from the hustle and bustle. A hive of activity, the renowned Gardiner Creek Trail is a go-to for bike riders, joggers, dog owners and those who bask in open spaces with direct access to Flinders Street Station.

## OUTDOOR HAVEN

Nestled in the heart of Camberwell, Bowen Gardens offers a serene escape into nature. A verdant oasis adorned with blossoming flowers and tranquil ponds, it invites visitors to wander amidst its lush pathways and rejuvenate amongst leafy surrounds. Established as a sanctuary for urban dwellers, its timeless beauty and peaceful setting provide a respite from daily life. Also within close proximity, Anderson Park is an expansive recreational hub home to an abundance of impressive sporting facilities, set against a backdrop of towering trees and soaring city views.

BELOW Bowen Gardens  
RIGHT Anderson Park

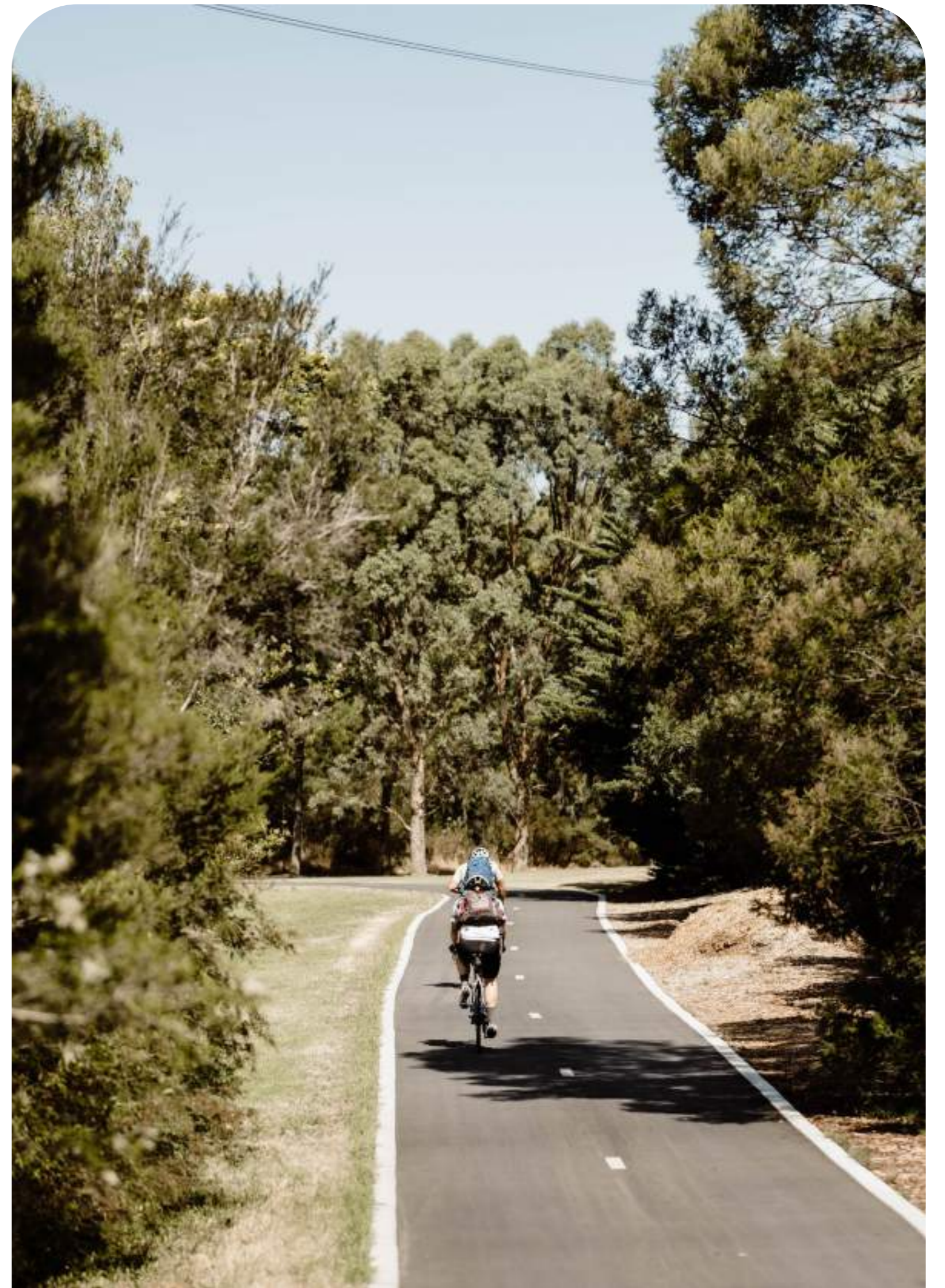




### A RECREATIONAL SANCTUARY

At 10-minute walk will find residents at Nettleton Park. A verdant sanctuary, this iconic parkland beckons locals with its centuries-old trees that provide ample shade while vibrant flowers add bursts of colour to the landscape. Meandering pathways are perfect for leisurely walks and are ideal for taking your four-legged companion along. Families gather for picnics on the manicured lawns, basking in the park's inviting landscape. With its well-maintained amenities and tranquil surroundings, Nettleton Park stands as a cherished retreat for those seeking solace and weekends spent with loved ones.

RIGHT & BELOW Nettleton Park





## EDUCATION

Camberwell plays host to some of the most prestigious schools in the state. Moulding future minds with integrity and grace, the suburb offers outstanding options for both primary and secondary education. Get ahead of the rest by enrolling at Camberwell Primary and Camberwell South Primary.

Considered one of the best public schools in Melbourne, take a tour of the state-of-the-art facilities at Camberwell High. In the private sector, St. Cecilia's Catholic College, Camberwell Grammar and Camberwell Girls Grammar are highly regarded for their extraordinary VCE results. With dynamic curricula and a tenacious commitment to student wellbeing, living with the educational hub of Melbourne is every parent's dream.

LEFT St. Cecilia's Primary School

BELOW Camberwell South Primary School



# TRANSPORT

Camberwell’s efficient public transport systems mean that you never have to worry about the hassle of parking your car. A 5-minute walk from your front door, tram lines 70, 72 and 75 provide convenient options for commuting. Dotted with nearby stations such as Gardiner, Glen Iris and Camberwell, locals can enjoy a seamless journey to Flinders Street Station and beyond. And for those preferring the comfort of their vehicle, the Monash Freeway is at arm’s reach, ensuring easy access to the city and surrounding areas.

BELOW Gardiner Station  
 RIGHT No. 72 Tram



# COLLABORATORS

Crest Camberwell is the result of a curated collaboration between industry leaders, where an unwavering dedication to craftsmanship and innovation unite.

Brought to life by acclaimed architecture firm Splinter Society, award-winning design landscape architect John Patrick and the inimitable developers at Progressio Developments, this exemplary collection of residences is the embodiment of thoughtful design and unrivalled expertise.





ARCHITECTS

SPLINTER SOCIETY

Splinter Society is a dynamic architecture and interior design studio with experience in all aspects of crafting human environments that present the utmost functionality and sustainability. Led by Asha Nicholas and Chris Stanley, Splinter Society has achieved great industry success—including being named the winner of the Victorian Architecture Awards for Residential Architecture in 2020. Recent projects include Colonnade House, The Auburn Apartments, Asaleo Office and the Brainpark Neuroscience Research Clinic at Monash University.

BELOW Asha Nicholas & Chris Stanley  
LEFT Completed Project

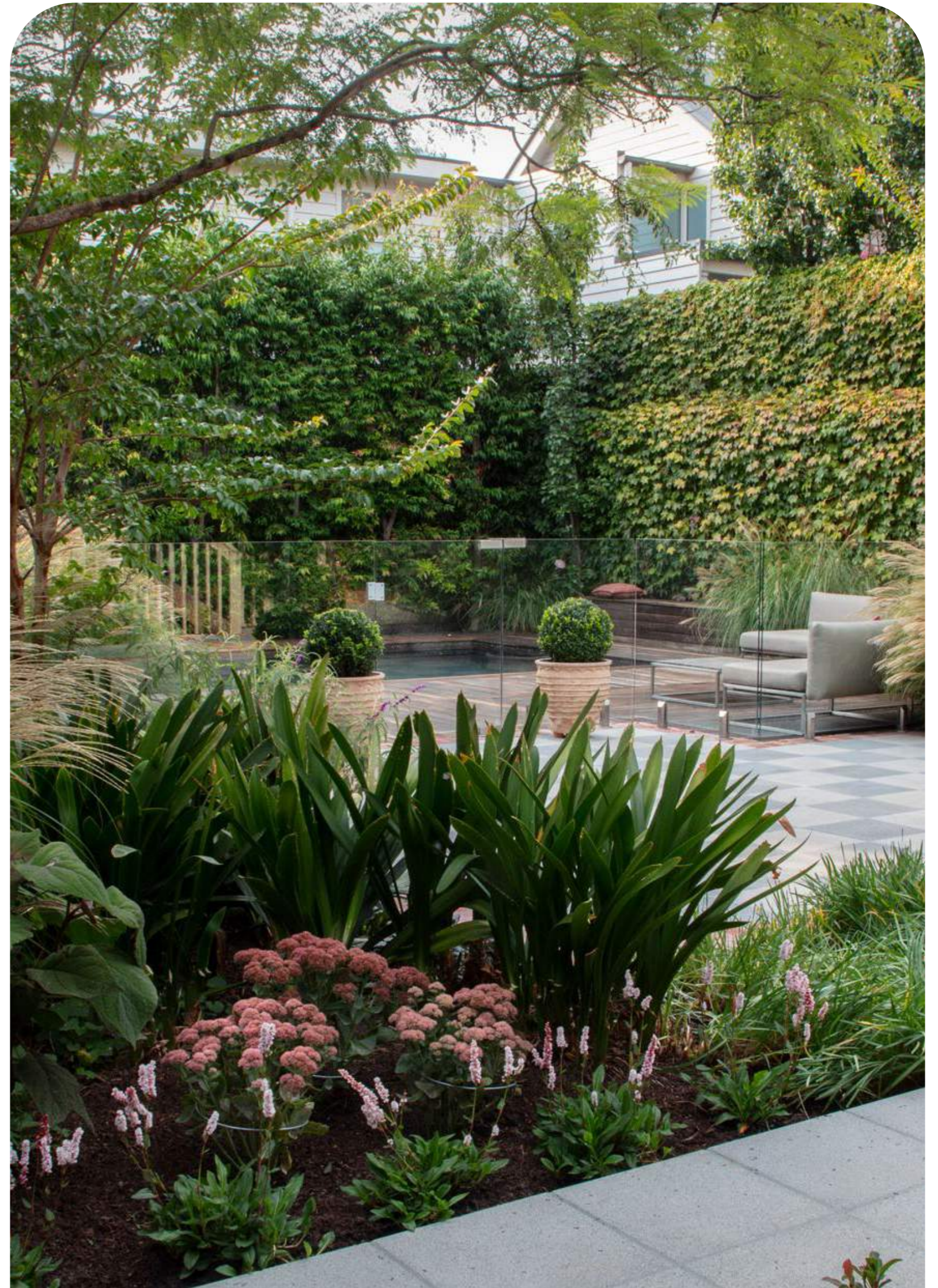


LANDSCAPER



John Patrick Landscape Architects conducts a broad range of landscape design and management projects, covering everything from heritage sites, to park master plans and residential projects. Formed in 1982 and headed by John Patrick himself, the firm conducts work both nationally and internationally.

BELOW John Patrick  
RIGHT Completed Project





DEVELOPER



Progressio Developments are proud to present Crest Camberwell—an exclusive collection of luxury homes in Camberwell. Their progressive thinking is paramount in every stage of the development cycle, embodied in their adaptivity to an ever-changing world and the needs of their valued clients. Collaborating with the industry’s leading designers and creatives, Crest Camberwell will bring elevated living to a picturesque pocket of Melbourne.

BELOW Tommy Tse  
LEFT Completed Project





Jarrold Farey – 0401 607 642

**Farey & Co.**  
REAL ESTATE

[crestcamberwell.com.au](http://crestcamberwell.com.au)

Creative by Earl.St

Disclaimer: While all reasonable care has been taken in the preparation of this brochure and the particulars contained herein, it is intended to be a visual aid and does not necessarily depict the finished state of the property or object shown. No liability whatsoever is accepted for any direct or indirect loss or consequential loss or damage arising in any way out of any reliance upon this brochure. Purchasers must rely upon their own enquiries and inspections. Furniture is not included with the property. Dimensions and specifications are subject to change without notice. Illustrations and photographs are for presentation purposes and are to be regarded as indicative only. This brochure does not form part of, and is not, an offer or a contract of sale.

